



13-15 November 2025
Midland Hotel, Manchester

Keynote Speaker:
The Rt Hon Sir Andrew McFarlane

With thanks to our sponsors

coram
CHAMBERS


DNA Legal
Proud to be part of the team


GARDEN COURT
50th
CHAMBERS


EXPERT WITNESS
GATEWAY


1GC
Family Law

LexTOX DRUG & ALCOHOL TESTING
A MEMBER OF SYNLAB

4pb

 ST JOHNS
BUILDINGS
BARRISTERS CHAMBERS



THURSDAY 13 NOVEMBER

13:30 – 15:30	Registration
15:30 – 15:45	Welcome and AGM
15:45 – 16:45	Legal Aid Update – Samantha Little , Solicitor, Russell-Cooke LLP and Jerry Bull , Solicitor, Atkins Hope Solicitors
16:45 – 17:15	Tea/Coffee
17:15 – 18:00	Children’s participation: Innovations in family justice practice Jude Eyre , Associate Director, Nuffield Family Justice Observatory
18:00 – 18:45	Beyond Labels: Helping Family Lawyers Navigate the Layers of Youth Selfhood Zoe Lambert , Founder of In-Between the Lines
18:45	Buffet supper Dinner wine sponsored by St John’s Buildings Chambers



FRIDAY 14 NOVEMBER



07:30 – 09:00	Breakfast
08:30 – 09:00	Registration for new delegates
09:00 – 09:30	Welcome and Introduction Her Honour Judge Sarah Singleton KC , Designated Family Judge, Greater Manchester, Conference Chair Co Chairs’ Report – Lorraine Cavanagh KC , St Johns Buildings Chambers and Jamie Niven-Phillips , Cafcass Legal
09:30 – 10:30	Keynote Address by The Right Honourable Sir Andrew McFarlane , President of the Family Division
10:30 – 10:50	Tea/Coffee
10:50 – 11:00	Racial Bias in hair strand testing , David Nicholson , Director, DNA Legal
11:00 – 12:00	Lawyers, Children and Parliament: Research and Practice in Making and Scrutinising Law for Children – Professor Ruth Lamont , Manchester University Sponsored by DNA Legal
12:00 – 13:15	WORKSHOP A (1) Joining the Dots: Understanding coercive control and risk Rachel Horman-Brown KC (Hon) , Solicitor, Watson Ramsbottom Ltd (2) A Death in the Family: Exploring the often traumatic issues and topics that arise when a child in care/accommodation or care leaver dies, including the role of the Coronial Courts – Alison Munroe KC , Garden Court Chambers (3) Open adoption, where are we now? – Karl Rowley KC , St John’s Buildings Chambers and Frances Heaton KC , St John’s Buildings Chambers (4) Kinship and Local Authorities: What is a Family Arrangement now? – Joanna Augustin , Solicitor, Invicta Law Ltd and Kirstine Hidalgo-Souto , Solicitor, Invicta Law Ltd (5) Voice of the Child: The approach in Public law and Private law proceedings – Forum Shah , Solicitor, Dawson Cornwall LLP and Janet Broadley , Solicitor, Goodman Ray (6) Fetal Alcohol Spectrum Disorder within Family Law/Care proceedings Dr Cassie Jackson , Consultant Clinical Psychologist



FRIDAY 14 NOVEMBER (Continued)

13:15 – 14:15	Lunch	
14:15 – 14:25	Presentation by Lawyers who Care – Lucy Barnes , East Anglian Chambers	
14:25 – 15:25	Panel Discussion: Child Sexual Exploitation – His Honour Judge Steven Parker , Designated Family Judge of Merseyside and Cheshire, Sabrina Hewitt , Founder and CEO SH Consultancy and Training, Rebecca Hodson , Social Work Team Manager, Manchester Complex Safeguarding Hub, Anthony Green , Social Work Team Manager, Manchester Complex Safeguarding Hub, SW. Chaired by Her Honour Judge Sarah Singleton KC , Designated Family Judge of Greater Manchester Sponsored by Garden Court Chambers	
15:25 – 16:40	WORKSHOPS B (1) Joining the Dots: Understanding coercive control and risk Rachel Horman-Brown KC (Hon) , Solicitor, Watson Ramsbottom Ltd (2) A Death in the Family: Exploring the often traumatic issues and topics that arise when a child in care/accommodation or care leaver dies, including the role of the Coronial Courts – Alison Munroe KC , Garden Court Chambers (3) Open adoption, where are we now? – Karl Rowley KC , St John's Buildings Chambers and Frances Heaton KC , St John's Buildings Chambers (4) Kinship and Local Authorities: What is a Family Arrangement now? – Joanna Augustin , Solicitor, Invicta Law Ltd and Kirstine Hidalgo-Souto , Solicitor, Invicta Law Ltd (5) Voice of the Child: The approach in Public law and Private law proceedings – Forum Shah , Solicitor, Dawson Cornwall LLP and Janet Broadley , Solicitor, Goodman Ray (6) Fetal Alcohol Spectrum Disorder within Family Law/Care proceedings – Dr Cassie Jackson , Consultant Clinical Psychologist	
16:40 – 17:00	Tea/Coffee	
17:00 – 18:00	Psychotherapy on a Knife Edge: Complex Edge of Care Families – Assessment and Intervention – Nicola Labuschagne , Consultant Clinical Psychologist	
19:30	Pre-dinner drinks	
20:00	Gala dinner With a performance by Time Flies (featuring His Honour Judge Patrick Perusko) Drinks reception sponsored by Lextox Dinner wine sponsored by 4PB Band sponsored by DNA Legal Social media sponsored by Expert Witness Gateway	   

SATURDAY 15 NOVEMBER

07:30 – 09:30	Breakfast	
09:00 – 09:30	Registration for new delegates	
09:30 – 10:30	Private Law Update – Richard Jones KC, 1GC Sponsored by 1GC	
10:30 – 11:30	What is "Expert Evidence" in suspected abusive head trauma and do we know what we don't know? – Professor Stivaros , Professor of Paediatric Neuroradiology and Translational Imaging, Royal Manchester Children's Hospital	
11:30 – 12:00	Tea/Coffee	
12:00 – 13:00	Public Law Update – Alison Easton KC , Coram Chambers Sponsored by Coram Chambers	
13:00	Closing Remarks by Chairs and Lunch	



Full residential conference fee at the Midland Hotel, ALC member	£665
Full residential conference fee at the Midland Hotel, Non ALC member	£790
Full residential conference fee at the Midland Hotel for Local Authority Lawyers	£570
Full residential conference fee at the Midland Hotel for 2 ALC members sharing	£525 each
Three day non-residential conference fee, excluding B&B and dinners	£470
Three day non-residential conference fee, including gala dinner	£515
Two day residential Thursday and Friday, including supper & 1 night B&B Thursday only	£540
Two day residential Friday & Saturday, including gala dinner & 1 night B&B Friday only	£585
Two day non-residential Thursday and Friday, excluding B&B and supper	£435
Two day non-residential Friday and Saturday, excluding B&B and gala dinner	£435
Two day non-residential Friday and Saturday, including gala dinner	£480

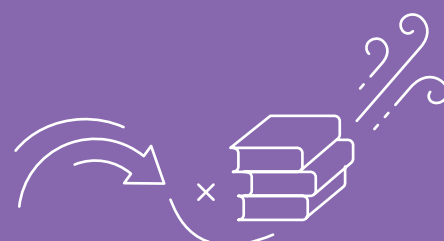
(One-day non-residential fee excludes B&B)

Thursday only, including supper but excluding accommodation	£175
Friday only, excluding dinner and accommodation	£270
Friday only, including gala dinner but excluding accommodation	£315
Friday only, excluding dinner and accommodation, ALC member, junior members of profession - less than 5 years PQE or 5 years call	£100
Saturday only, including lunch	£175

Partner's rate for B&B, per night	£20
Partner's rate for Thursday, including B&B and supper	£75
Partner's rate for Friday, including B&B and gala dinner	£115




 Special requirements **MUST** be specified when booking





To make a booking & secure your place at
34th ALC Annual Conference please visit the ALC website:

www.alc.org.uk

Click on 'Events and Training'



Payment can be made by bank transfer or cheque.
Your invoice is accessible on the booking confirmation page.

Full bank transfer details shown on your invoice.

You will receive a confirmation email after your booking
has been successfully received.

For cheque payments:

Download invoice and send with cheque.

Payable to CPE:

CPE
4 Netley Lodge Close
Netley Abbey
Southampton
SO31 5BT





Venue

Midland Hotel
Peter Street
Manchester M60 2DS
(Sat Nav/Google maps: M2 3NQ)
Telephone: 0161 236 3333
Hotel Check in from 3pm

Accommodation check-in will be available at main hotel reception on arrival. We cannot guarantee your room will be ready prior to standard check in time of 15:00, (although the hotel will do its best to have as many rooms ready as possible). If your room is not ready your luggage can be stored and your key can be collected during the coffee break at 16.45

How to Get There

Rail

The main station for nationwide services is Manchester Piccadilly <https://tfgm.com/public-transport/train> (¾ mile) which is linked to the hotel by the Metrolink Network (alighting at St Peter's Square) www.metrolink.co.uk and by Free Metrolink Bus route. The closest Free Bus 1 stop is Princess Street, which is near St. Peter's Square Tram Station, approximately a 6-minute walk from the bus stop to the hotel. <https://www.tfgm.com/public-transport/bus/free-bus>

Car

Follow signs for Manchester Central Convention Complex/Bridgewater Hall onto Medlock Street. Go through lights onto Lower Mosley Street. Pass Bridgewater Hall on your right and the rear of the hotel is facing you.

Consult https://tfgm.com/travel-updates/travel-alerts?active_tab=road for road closures and diversions.

M2 3NQ sat nav to hotel (for drop off only, not parking)

Air

Manchester International 10 miles from the hotel. Connected to the city centre by rail to Manchester Piccadilly and Manchester Oxford Road Stations and by Metrolink to the St Peter's Square stop to the side of the hotel.

Car Parking

The hotel do not offer free parking

Closest car park is NCP Manchester Central car park, Lower Moseley Street (sat nav M2 3GX)

ALC do not have any concession rates for parking

We recommend using public transport

Facilities

Guests staying in the hotel can access the relaxation pool, thermal areas and gym. Access to the pool area is subject to availability and is limited to 1 hour. Contact the spa reception to book a time slot to avoid disappointment as there are limited spaces. If you wish to book any treatments or require more information please contact the spa directly on spa@leonardohotels.com

How to Book

Bookings MUST be made online and priority will be on a first come, first served basis. Once the Conference Hotel is full, alternative accommodation will be found nearby and you will be advised accordingly.

Online booking only via the ALC website. www.alc.org.uk

Click on the **Events & Training** button

Payment by Secure Bank Transfer OR Cheque made payable to CPE and sent with downloaded invoice to:

CPE

4 Netley Lodge Close
Netley Abbey
Southampton
SO31 5BT
alc@cpluse.co.uk

Please note that payment must be received and acknowledged prior to the event.

Refunds

Refunds will only be made on cancellations received before Monday 13th October, less an administration charge of £50.

No refunds will be made after that date. However, a substitute delegate is acceptable.

Both pre-paid and unpaid bookings will be liable for full charge. Full joining instructions will be sent to delegates approximately 10 days prior to the event once full payment has been received.

Queries & Assistance

For assistance with booking please contact Helen or Amy on 01371 705050 or email alc@cpluse.co.uk

For all other matters relating to conference contact Francesca: email admin@alc.org.uk or call 07473 590332.

Continuing Competence

Solicitors: Attending this conference will contribute to the 'SRA competency part B: legal knowledge' requirement of your training and development plan.

Dress Code

Casual during the day.

The Gala Dinner is a 'Glad Rag' affair: Cocktail Dresses and Lounge Suits.

Become a Member of The ALC

Membership of the ALC is open to all legal and other professionals working with or for children.

Annual subscription for lawyers: £85
(discount for group membership)

Associate membership (non lawyers) £40

Student membership: £15

Further details available from:

www.alc.org.uk

Email: admin@alc.org.uk

Telephone: 07473 590332

