



Association of **Lawyers for Children**  
Promoting justice for children and young people



**16-18 November 2023**  
Midland Hotel, Manchester




Keynote Speaker:  
**Lord Justice Baker**

With thanks to our sponsors





## THURSDAY 16 NOVEMBER

- 13:30 – 15:00** Registration – with welcome gift sponsored by  DEKA CHAMBERS
- 15:00 – 15:15** **Welcome and AGM** – Wifi sponsored by  ST JOHNS BUILDINGS
- 15:15 – 16:15** **Legal Aid Update** – **Samantha Little**, Russell-Cooke Solicitors LLP and **Jerry Bull**, Atkins Hope Solicitors
- 16:15 – 16:30** Tea/Coffee
- 16:30 – 17:15** **The forgotten 10%: Private Law Applications Involving Non-Parents** – **Jude Eyre**, Associate Director, Nuffield Family Justice Observatory
- 17:15 – 18:00** **Language Matters** – **Helen Adam**, Family Mediator
- 18:00 – 18:45** **Good Practice Guidance on how to treat trans people in the Family Courts** – **Reagan Persaud**, Spire Barristers
- 19:00** **Buffet supper**  
With wine sponsored by  42BR BARRISTERS

## FRIDAY 17 NOVEMBER

- 07:30 – 08:45** Breakfast
- 08:45 – 09:00** Registration
- 09:00 – 09:30** **Welcome and Introduction**  
**Her Honour Judge Sarah Singleton KC Senior Circuit Judge**, Designated Family Judge, Greater Manchester, Conference Chair  
**Co Chairs' Report** – **Sharon Segal**, 1GC and **Somia Siddiq**, ITN Solicitors
- 09:30 – 10:30** **Keynote presentation by Lord Justice Baker**
- 10:30 – 11:00** Tea/Coffee (10.50 Presentation by DNA Legal)
- 11:00 – 12:00** **Panel Discussion: Transparency in the Family Court** Sponsored by   
**Her Honour Judge Mererid Edwards**, Jack Harrison, Deans Court Chambers and **Dr Julie Doughty**, Senior Lecturer in Law, Cardiff University
- 12:00 – 13:15** **WORKSHOP A**
- (1) **Feeling safe? Working with children impacted by domestic abuse**  
**Professor Jane Callaghan**, Director of the Centre for Child Wellbeing and Protection, University of Stirling
  - (2) **Modernising birth family contact in adoption: A theory of change**  
**Professor Elspeth Neil**, Director of Social Work Research University of East Anglia
  - (3) **Interface between Criminal and Family Law**  
**Jenny Wiltshire / Peter Csemiczky**, Hickman & Rose, **Louise MacLynn KC**, 1GC
  - (4) **FDAC – Where are we now? His Honour Judge Patrick Perusko**, Designated Family Judge for Milton Keynes
  - (5) **Cafcass commissioned services: court ordered activities for private law cases**  
**Cafcass Service Managers**
  - (6) **Representing and securing the return of children from non-Hague countries**  
**Mani Basi**, 4PB and **Richard Cheesley MBE**, Tipstaff of the High Court HM Courts and Tribunals Service



## FRIDAY 17 NOVEMBER (Continued)

13:15 – 14:15 Lunch

14:15 – 15:15 **Who Do You See? What Do You See?**  
**Judith AM Denton**, The Black Care Experience

15:15 – 16:30

### WORKSHOPS B

- (1) **Feeling safe? Working with children impacted by domestic abuse**  
**Professor Jane Callaghan**, Director of the Centre for Child Wellbeing and Protection, University of Stirling
- (2) **Modernising birth family contact in adoption: A theory of change**  
**Professor Elspeth Neil**, Director of Social Work Research University of East Anglia
- (3) **Interface between Criminal and Family Law**  
**Jenny Wiltshire / Peter Csemiczky**, Hickman & Rose, **Louise MacLynn KC**, 1GC
- (4) **FDAC – Where are we now? His Honour Judge Patrick Perusko**, Designated Family Judge for Milton Keynes
- (5) **Cafcass commissioned services: court ordered activities for private law cases**  
**Cafcass Service Managers**
- (6) **Representing and securing the return of children from non-Hague countries**  
**Mani Basi**, 4PB and **Richard Cheesley MBE**, Tipstaff of the High Court HM Courts and Tribunals Service

16:30 – 16:45 Tea/Coffee

16:45 – 17:45 **The Role of the Paediatric Haematologist in Child Protection Cases**  
**Dr Russell Keenan**, Consultant Paediatric Haematologist

19:30

### Gala dinner

Drinks reception sponsored by **LexTOX** DRUG & ALCOHOL TESTING  
 A MEMBER OF SYNLAB

Dinner wine sponsored by **4pb**

Band sponsored by **DNA Legal**

Social media sponsored by **coram**  
 CHAMBERS

## SATURDAY 18 NOVEMBER

07:30 – 09:00 Breakfast

09:00 – 09:30 Registration

09:30 – 10:30 **Private Law Update – Timothy Bowe KC**, St Ives Chambers

10:30 – 11:30 **Psychological assessment of children and parents within complex family systems**  
**Dr Rasha Ravenscroft**, Clinical Psychologist

11:30 – 12:00 Tea/Coffee

12:00 – 13:15 **Public Law Update – Kate Burnell KC**, St Johns Buildings

13:15 Closing Remarks and Lunch



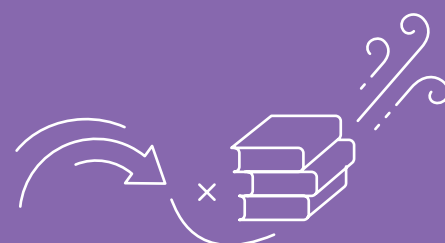
<b>Full residential conference fee at the Midland Hotel, ALC member</b>	<b>£595</b>
<b>Full residential conference fee at the Midland Hotel, Non ALC member</b>	<b>£720</b>
<b>Full residential conference fee at the Midland Hotel for Local Authority Lawyers</b>	<b>£500</b>
<b>Full residential conference fee at the Midland Hotel for 2 ALC members sharing</b>	<b>£425 each</b>
<b>Three day non-residential conference fee, excluding B&amp;B and dinners</b>	<b>£400</b>
<b>Three day non-residential conference fee, including gala dinner</b>	<b>£445</b>
<b>Two day residential Thursday night and Friday, including supper</b>	<b>£470</b>
<b>Two day residential Friday night and Saturday, including gala dinner</b>	<b>£515</b>
<b>Two day non-residential Thursday and Friday, excluding B&amp;B and supper</b>	<b>£365</b>
<b>Two day non-residential Friday and Saturday, excluding B&amp;B and gala dinner</b>	<b>£365</b>
<b>Two day non-residential Friday and Saturday, including gala dinner</b>	<b>£410</b>

**(One-day non-residential fee excludes B&B)**

<b>Thursday only, including supper but excluding accommodation</b>	<b>£195</b>
<b>Friday only, excluding dinner and accommodation</b>	<b>£270</b>
<b>Friday only, including gala dinner but excluding accommodation</b>	<b>£315</b>
<b>Friday only, excluding dinner and accommodation, ALC member who is a junior member of profession - less than 5 years PQE or 5 years call</b>	<b>£100</b>
<b>Saturday only, including lunch</b>	<b>£185</b>

<b>Partner's rate for B&amp;B, per night</b>	<b>£30</b>
<b>Partner's rate for Thursday, including B&amp;B and supper</b>	<b>£70</b>
<b>Partner's rate for Friday, including B&amp;B and gala dinner</b>	<b>£115</b>


 Special requirements **MUST** be specified when booking
 





To make a booking & secure your place at 32nd ALC Annual Conference please visit the ALC website:

**[www.alc.org.uk](http://www.alc.org.uk)**

**Click on 'Events and Training'**



Payment can be made by bank transfer or cheque.  
Your invoice is accessible on the booking confirmation page.

Full bank transfer details shown on your invoice.

You will receive a confirmation email after your booking has been successfully received.

**For cheque payments:**

Download invoice and send with cheque.

**Payable to CPE:**

CPE  
4 Netley Lodge Close  
Netley Abbey  
Southampton  
SO31 5BT





# GENERAL INFORMATION

## Venue

Midland Hotel  
Peter Street  
Manchester M60 2DS  
(Sat Nav/Google maps: M2 3NQ)  
Telephone: 0161 236 3333  
Hotel Check in from 3pm

Accommodation check-in will be available at main hotel reception on arrival. We cannot guarantee your room will be ready prior to standard check in time of 15:00, (although the hotel will do its best to have as many rooms ready as possible). If your room is not ready your luggage can be stored and your key can be collected during the coffee break at 16.15

## How to Get There

### Rail

The main station for nationwide services is Manchester Piccadilly <https://tfgm.com/public-transport/train> (¾ mile) which is linked to the hotel by the Metrolink Network (alighting at St Peter's Square) [www.metrolink.co.uk](http://www.metrolink.co.uk) and by the free bus route (formally Metroshuttle). The nearest stop is Peter Street, outside the Radisson Hotel. <https://tfgm.com/public-transport/bus/free-bus>

### Car

Follow signs for Manchester Central Convention Complex/Bridgewater Hall onto Medlock Street. Go through lights onto Lower Mosley Street. Pass Bridgewater Hall on your right and the rear of the hotel is facing you.

Consult [https://www.manchester.gov.uk/info/500352/roadworks\\_and\\_closures](https://www.manchester.gov.uk/info/500352/roadworks_and_closures) for road closures and diversions.

M2 3NQ sat nav to hotel (for drop off only, not parking)

### Air

Manchester International 10 miles from the hotel. Connected to the city centre by rail to Manchester Piccadilly and Manchester Oxford Road Stations and by Metrolink to the St Peter's Square stop to the side of the hotel.

## Car Parking

### The hotel do not offer free parking

Closest car park is NCP Manchester Central car park, Lower Moseley Street (sat nav M2 3GX)

ALC do not have any concession rates for parking

We recommend using public transport

## Facilities

Guests staying in the hotel can access the relaxation pool, thermal areas and gym. Access to the pool area is subject to availability and is limited to 1 hour. Contact the spa reception to book a time slot to avoid disappointment as there are limited spaces. If you wish to book any treatments or require more information please contact the spa directly on [Spa@TheMidlandManchester.co.uk](mailto:Spa@TheMidlandManchester.co.uk)

## How to Book

Bookings MUST be made online and priority will be on a first come, first served basis. Once the Conference Hotel is full, alternative accommodation will be found nearby and you will be advised accordingly.

Online booking only via the ALC website. [www.alc.org.uk](http://www.alc.org.uk)

Click on the **Events & Training** button

Payment by Secure Bank Transfer OR Cheque made payable to CPE and sent with downloaded invoice to:

### CPE

4 Netley Lodge Close  
Netley Abbey  
Southampton  
SO31 5BT  
[alc@cpluse.co.uk](mailto:alc@cpluse.co.uk)

Please note that payment must be received and acknowledged prior to the event.



## Refunds

Refunds will only be made on cancellations received before Monday 16th October, less an administration charge of £50.

No refunds will be made after that date. However, a substitute delegate is acceptable.

Both pre-paid and unpaid bookings will be liable for full charge. Full joining instructions will be sent to delegates approximately 10 days prior to the event once full payment has been received.

## Queries & Assistance

For assistance with booking please contact Helen or Amy on 01371 705050 or email [alc@cpluse.co.uk](mailto:alc@cpluse.co.uk)

For all other matters relating to conference contact Francesca: email [admin@alc.org.uk](mailto:admin@alc.org.uk) or call 07473 590332.

## Continuing Competence

**Solicitors:** Attending this conference will contribute to the 'SRA competency part B: legal knowledge' requirement of your training and development plan.

## Dress Code

Casual during the day.

The Gala Dinner is a 'Glad Rag' affair: Cocktail Dresses and Lounge Suits.

## Become a Member of The ALC

Membership of the ALC is open to all legal and other professionals working with or for children.

Annual subscription for lawyers: £85 (discount for group membership)

Associate membership (non lawyers) £40

Student membership: £15

Further details available from:

[www.alc.org.uk](http://www.alc.org.uk)

Email: [admin@alc.org.uk](mailto:admin@alc.org.uk)

Telephone: 07473 590332